

the **ABC'S** of

PAWA254
Art Rising!

SOCIAL Accountability



©Pawa**254**

Permissions will be generally granted when sought, but all rights reserved. No part of this publication may be reproduced without prior written permission from the copyright holders.

Layout and illustrations:
©Mdogo

Uraia

PAWA254
Art Rising!

 **Norway**

HII SI ROADY YA MITA CHWANI !



HAIYA... HII
LAMI HADI INA PEEL !

TWENDENI TU-RATE
THE HEALTH CENTER !

Social Accountability refers to actions initiated by citizen groups to hold public officials, politicians, and service providers to account for their conduct and performance in terms of service delivery, improving people's welfare and protecting people's rights.

Principles of Social Accountability

YANI, YOU'RE EATING AND EATING AS WE STRUGGLE AND SUFFER ?

WE WILL HAVE TO RECALL YOU !!



1. Citizen Action is based on a group of well-organized citizens groups who work together to give feedback, raise concerns, demand and advocate for accountability from the government.

2.

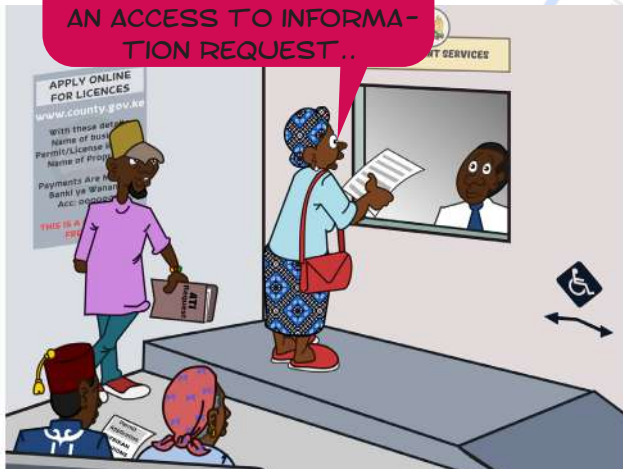
THE GOVERNMENT HAS RECEIVED
YOUR PETITION AND WILL RESPOND
WITHIN 14 WORKING DAYS...



2. State Action refers to actions initiated by citizen groups to hold public officials, politicians, and service providers to account for their conduct and performance in terms of service delivery, improving people's welfare and protecting people's rights.

3.

I AM HERE TO MAKE
AN ACCESS TO INFORMATION
REQUEST ..



3. Access to Information entails provision of reliable data to citizens by duty bearers to facilitate social accountability processes. Social accountability fails when data and information is either absent or willfully denied. Access to information can mean two things: physical access to source documents; and their availability in a format that is understandable to users.

4.

WE NEED TO MAKE PUBLIC AMENITIES MORE ACCESSIBLE TO PERSONS WITH DISABILITIES !



4. Public Participation involves different mechanisms through which citizens, or their representatives engage with and seek to influence public processes by participating in policy formulation processes, implementation, and monitoring to achieve civic objectives. An example is citizens participating in the budget process at the National or County level.

Legal Provisions for Social Accountability

i. Constitution of Kenya, 2010.

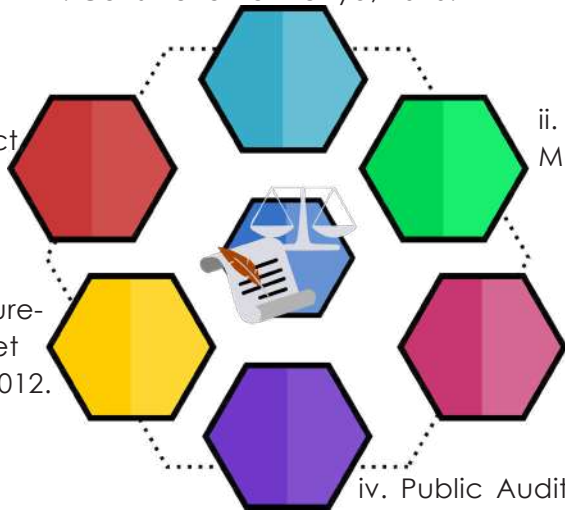
ii. Public Finance, Management Act, 2012.

iii. County Governments Act, 2012.

iv. Public Audit Act, 2015.

vi. Access to Information Act, 2016.

v. Public Procurement and Asset Disposal Act, 2012.




Common Accountability Issues



Poor public service delivery (and Citizens do not know how to monitor or complain about poor public services).

The budgets and reports of public institutions are not easily known and accessible by the public (and Citizens do not know about participatory planning and joint budget preparation).

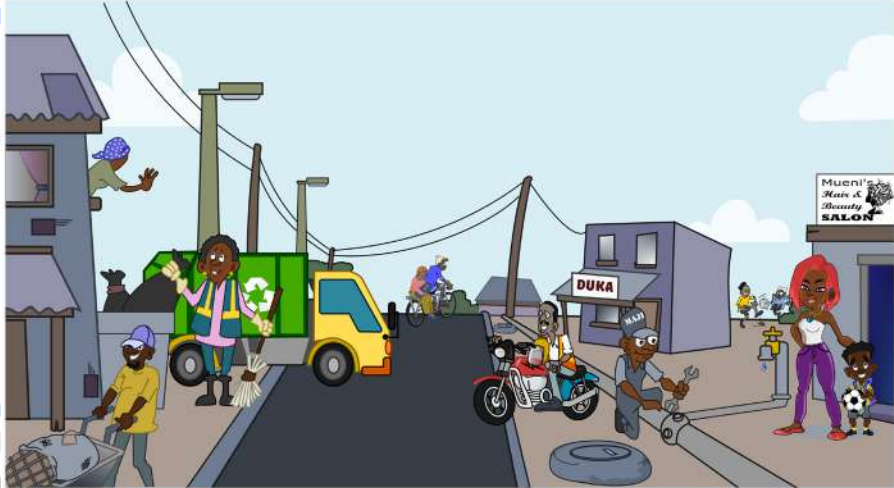


HOW WILL I MAKE IT TO SEEK MEDICAL ATTENTION??

The illustration shows a person in a wheelchair positioned at the base of a set of stairs leading to a building labeled 'HOSPITAL'. A red circle with a diagonal slash, indicating prohibition, is placed over the stairs. The background features faint icons for 'Accountability', 'Transparency', and 'Participation'.

Needs of marginalized groups are often not considered during planning and implementation of projects.

Importance of Social Accountability



It leads to improved efficiency of public service delivery through enhanced and prudent use of public funds and improved budget utilization.

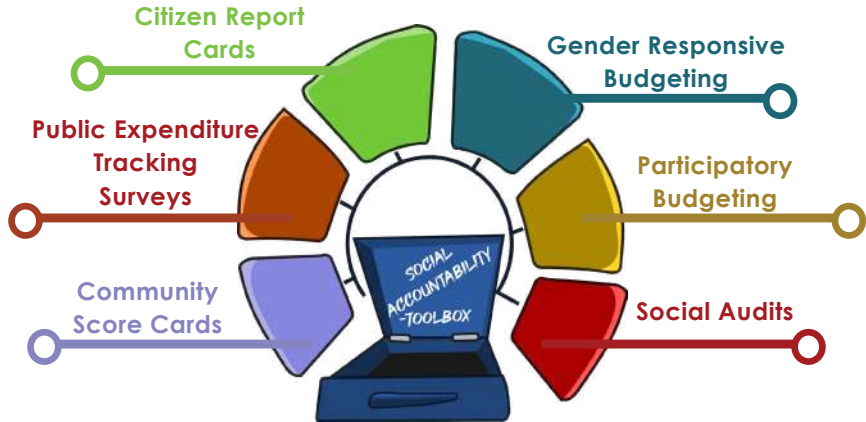
It emphasizes the needs of vulnerable, marginalized and traditionally excluded groups in policy formulation and implementation.

It tackles gender-based imbalances.

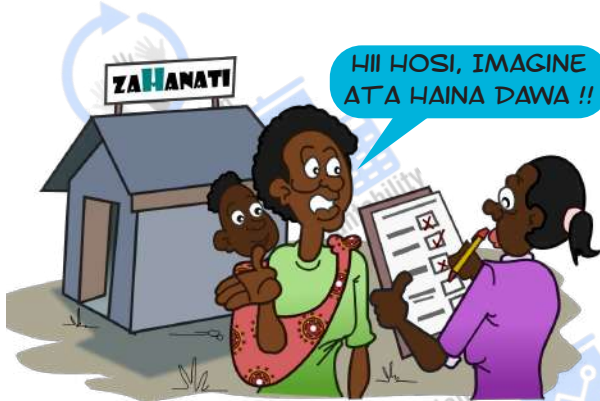
It facilitates links between citizens and local governments in the context of decentralization.

It constructs new democratic spaces for political engagement and ensures that existing spaces are used to advocate for good governance.

Social Accountability Mechanisms



These are **Tools** that are used by citizen groups to pursue social accountability, i.e to hold public officials, politicians, and service providers to account for their conduct and performance in terms of service delivery, improving people's welfare and protection of people's rights.



HII HOSI, IMAGINE
ATA HAINA DAWA !!

Citizen Report Card(s)

Are participatory surveys that seek user feedback on the quality and performance of public services in order to raise citizen awareness and ultimately bring about reforms in the public service delivery system.

KUMBE HAPA NДИО
PESA INAPOTELEA!

Public Expenditure Tracking Survey(s)

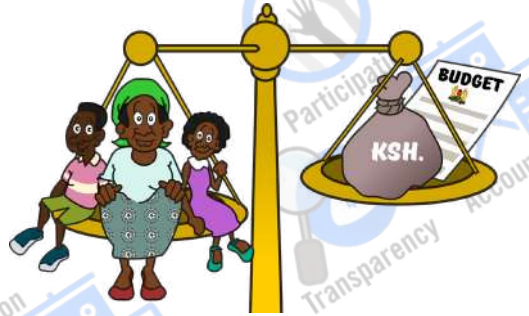
These are surveys that seeks to establish the amount of funds received at each point in the chain of Public Service delivery, from the National Treasury to the last point where the funds are intended to be spent.

12.



Gender Responsive Budgeting

A gender-responsive budget is a budget that works for everyone (women and men, girls and boys) by ensuring gender-equitable distribution of resources and by contributing to equal opportunities for all.



**THE ESTIMATES
SHOULD TALLY
WITH THE CFSP**



Participatory Budgeting

Participatory budgeting is a form of citizen participation in which citizens are involved in the process of deciding how public money is spent. At the local level. People are given a role in the scrutiny and monitoring of the process following the allocation of budgets.

Budgetting Process

MR. SPEAKER, I'M
HERE TO TABLE THIS
YEAR'S BUDGET ..



On the 30th of August of every year Budget circular is issued by the County Treasury and on 1st September the Annual Development Plan is tabled at the County Assembly by the County Executive Committee Member for Planning.

Budgeting is a financial plan that estimates the expenditures and revenues of a state for the next or future financial for a one-year period.

The 4 stages of the budget process in Kenya

The auditor general's report should contain a clear expression of the auditor's opinion on the financial statements and a statement of compliance to the laws governing public finance management.

Audit

1. Formulation.

This is conducted by the Executive of both the National and County Governments. Long and mid term planning is done as well as the preparation of annual budget estimates.

2. Approval.

Once budgets are approved by parliament and the county assemblies, they are implemented by the Executive, both at the National and County levels of government.

3. Implementation.

This is a process where the annual estimates of public revenues and expenditure made by the executive branch acquires a status of a legal act after discussion and voting in parliament and at the county assemblies.



Participation



Accountability



Transparency



Participation



Accountability



Transparency



Participation



Accountability



Transparency



Participation



Accountability



Transparency



Participation



Accountability



Transparency



Participation



Accountability



Transparency



Participation



Accountability



Transparency



Participation



Accountability



Transparency



Participation



Accountability



Participation

Uraia

PAWA254
Art Rising!

 **Norway**

